



Eagle Express

SCHOOL WEEKLY NEWSLETTER

Phone: 413-423-3326

<http://www.erving.com>

THANKFUL EDITION

ERVING, MA

NOVEMBER 3, 2023



Thursday, Nov 9
Veterans Day Assembly
10 am

Friday, Nov 10
Veterans Day
NO SCHOOL



Monday, Nov 13
Picture Re-Takes

Tuesday, Nov 14 -
Thursday, Nov 16
Conferences, PK - 6
EARLY DISMISSAL
1:15
NO AFTER SCHOOL

Tuesday, Nov 21
School Committee
Meeting
7:00 pm

Wednesday, Nov 22 -
Friday, Nov 24
Thanksgiving Break
NO SCHOOL



hello PRESCHOOL



Preschool is doing a science experiment that involves pumpkins on the edge of the woods by the back field! I wonder what it could be! I can't wait to find out!



All Veterans are cordially invited to attend, and be recognized for their service, at our

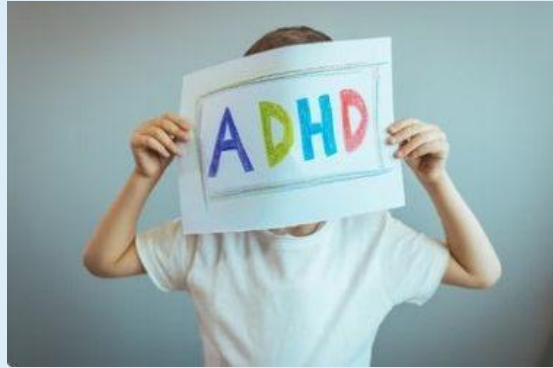
VETERANS DAY PROGRAM

Thursday, November 9, 2023
9:00 coffee hour (no food will be served)
10:00 Assembly

Erving Elementary School
28 Northfield Road
Erving, MA 01344

Please R.S.V.P. with Pat Winn at 413-423-3326,
or via email at jennifer.smith@erving.com

Northampton Area Pediatrics Parenting Workshop



ADHD AND SPIRITED CHILDREN With Stephen Brevik, Psy.D.

Stephen Brevik, Psy.D. received his doctorate degree in clinical psychology from William James College (formerly the Massachusetts School of Professional Psychology) where he participated in training at Boston Public Schools, and in community mental health settings at Riverside Community Care and Youth Opportunities Upheld, Inc. Dr. Brevik is a licensed psychologist who has worked with countless families affected by ADHD, in both private and group practice. Currently, Dr. Brevik has a private practice in Amherst, Massachusetts where he provides outpatient psychotherapy to children, adolescents, and adults.

Sunday, November 19th

From 4pm – 5:30pm

Through Zoom

Rewards, consequences, positive praise...you have tried it all and still feel stuck. Parenting is a marathon and finding the right approach for your child is key. Please join Dr. Brevik as he talks about the most common behavior challenges and what parents can do.

<https://us02web.zoom.us/j/81237584677?pwd=cS9FYzFTSU5qMEUwOXBDYk82K0VZdz09>

Meeting ID: 812 3758 4677 **Passcode:** : 555205

View our past Parenting Workshops on our website below:

<https://www.naped.com/workshops-and-events/>

Questions please contact us at:

contactus@naped.com



Union 28
Community Network for Children

VIRTUAL FAMILY WORKSHOP

*What Makes Your Child Tick?
Understanding How Sensory Input
Impacts Your Child's Behaviors*



WEDNESDAY
8
NOVEMBER
7:30PM



- Did you know that we each have our own sensory profile including your children? Each sensory profile interacts with the world and its stimuli differently, therefore resulting in responses that cannot always be understood if you do not experience the stimuli in the same way. This training will give an in-depth understanding of all seven senses. It will teach how senses impact everyday behaviors. Participants will learn how to read these behaviors and have better understanding of how each child ticks. Knowing how each child ticks gives a huge advantage to the adult, so they can support the child best. Participants will likely gain more compassion for their children. They will gain knowledge on how to prevent situations, and how to accommodate children's needs.

- **Register Now to receive log-in code:**

Use QR code or this link

<https://form.jotform.com/221235700085143>



Facilitated by:
Jill Vetstein
MSW, LICSW

The Union #28 Community Network for Children program is funded by the Coordinated Family and Community Engagement (CFCE) grant awarded to the Union #28 Schools by the Massachusetts Department of Early Education and Care, and donations from the Community.



ERVING PUBLIC LIBRARY

TEENS:

Come tell us what
YOU want here at the library...
while enjoying a FREE
ice cream sundae!



Looking for YOUR ideas on:

- future teen events
- stuff you can check out at the library
- how the Teen Room should work

**MONDAY,
NOVEMBER 13TH
3:30-5PM**

If coming from TFHS,
take Bus Route A with a
parent/guardian note if needed!



The Library's
Teen Webpage



2 Care Drive, Erving, MA 01344
library@erving-ma.gov
413-423-3348



Union 28 Community Network for Children Program September - December 2023



The Union #28 Community Network for Children program is funded by the Coordinated Family and Community Engagement (CFCE) grant awarded to the Union #28 Schools by the Massachusetts Department of Early Education and Care, Union 28 schools and donations from the community.

Monday

Tuesday

Wednesday

Thursday

Friday

Saturday

Sunday

OCTOBER



Shutesbury
Tales & Tunes
@M.N. Spear
Mem Library
@10am.
2nd

New Salem Tales
& Tunes @ New
Salem Library
@10am
3, 10, 17, 24, 31

Wendell Library
Playgroup @10am
4, 11, 18, 25
Leverett Library
Playgroup
@10:30am
4, 11, 18, 25

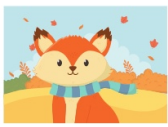
CNC Children's
Closet
8:00am-Noon
5, 12, 19, 26
PJ StoryTime @
Erving Public Library
6:00-6:45pm
12th

Shutesbury
Tales & Tunes @
Shutesbury
Elementary
School @10am
13, 20, 27

Visit the **Wendell**
Free Library on
Saturdays from
10-3!


Family Playtime
10:00-11:30
@Erving
Elementary
School
22nd

NOVEMBER



New Salem Tales
& Tunes @ New
Salem Library
@10am
7, 14, 21, 28

Wendell Library
Playgroup @10am
1, 8, 15, 22
Leverett Library
Playgroup
@10:30am
1, 8, 15, 22

CNC Children's
Closet
8:00am-Noon
2, 9, 16, 30
PJ StoryTime @
Erving Public Library
6:00-6:45pm
16th

Shutesbury
Tales & Tunes @
Shutesbury
Elementary School
@10am
3, 17

Visit the **Leverett**
Library on
Saturdays from
10-3!


Family Playtime
10:00-11:30
@Erving
Elementary
School
19th

DECEMBER



Visit the **M.N.
Spear Memorial
Library** on
Mondays from
11-1 and 3-6!

New Salem Tales
& Tunes @ New
Salem Library
@10am
5, 12, 19

Wendell Library
Playgroup @10am
6, 13, 20
Leverett Library
Playgroup
@10:30am
6, 13, 20

CNC Children's
Closet
8:00am-Noon
7, 14, 21

Shutesbury
Tales & Tunes @
Shutesbury
Elementary
School @10am
1, 8, 15, 22

Visit the **New
Salem Library** on
Saturdays from
10-2!


Family Playtime
10:00-11:30
@Erving
Elementary
School
17th

M.N. Spear
Memorial Library
10 Cooleyville Rd
Shutesbury

New Salem Library
23 S Main St
New Salem

Leverett Library
75 Montague Rd
Leverett
Wendell Library
7 Wendell Depot
Rd Wendell

Children's Closet
4 Montague Rd,
Leverett
Erving Public
Library
2 Care Drive, Erving

Shutesbury
Elementary School
23 W Pelham Rd
Shutesbury

We love our local
libraries!


Erving Elementary
School
28 Northfield Rd
Erving



QR Code
Registration

Contact the Community Network for Children. 413-422-0170 call/text
budine@erving.com Most programs are drop-in with registration optional. Special events marked with an * require registration.
<https://form.jotform.com/212215759871158>

Please note: Ongoing programs may not occur during school vacations or holidays. Please check the schedule!
If inclement weather is a concern, contact CNC, check Facebook or the CNC Website for info.

Find us on 



Families in Nature with the Hitchcock Center

Interactive, in-person family program providing inquiry based environmental and outdoor education for small groups to explore nature in the fall. Each session includes movement, song, nature exploration and a story book with a focus on learning from nature. Program best for children 2 - 6 years of age with an adult.

Katie Koerten, Educator at the Hitchcock Center will be facilitating the programs. This program will include 3 sessions:

****REGISTRATION REQUIRED- Group size limited.**

Registration link: <https://form.jotform.com/212215759871158>

Wednesdays, 1:30pm

We will meet at the Quabbin Overlook, BEHIND the New Salem Fire Station at 33 South Main St, New Salem. FOLLOW the signs!

- September 13th, Colors of Nature
- October 18th, Squirrel Stories
- November 1st, You Are A Raccoon!



Contact Gillian @ CNC with any questions 413-422-0170 (call/text)

"Funded by a grant from the New Salem Cultural Council, a local agency supported by the Massachusetts Cultural Council, offered in collaboration with the Community Network for Children a program funded by the CFCE grant from the MA Department of Early Education and Care, and the New Salem Library.



Hitchcock Center
EDUCATION FOR A HEALTHY PLANET



ERVING PUBLIC LIBRARY
2 CARE DRIVE, OFF ROUTE 63, ERVING, MA 01344



PJ STORYTIME

WITH U28 COMMUNITY NETWORK FOR CHILDREN

2nd Thursdays*
6-6:45 pm:

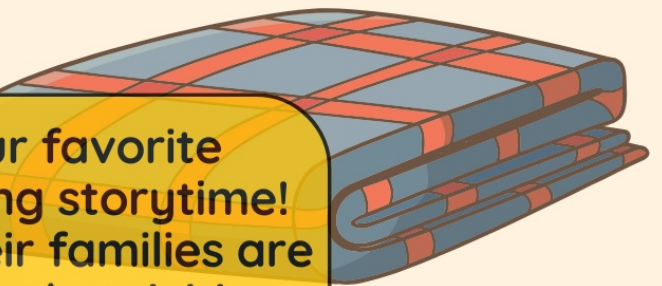
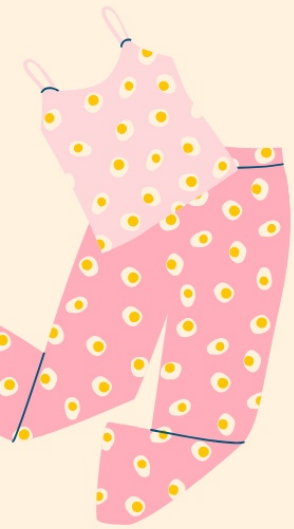
- October 12: Elephant, Piggie & Pigeon Too!
- November 16: Pete the Cat and friends
- January 11: Hurry, Hurry Drive the Fire Truck
- February 8: Let It Snow
- March 14: Teddy Bear Picnic

Registration
requested for
planning
purposes



*except for November
due to the holiday

Use QR Code to Register or
[https://form.jotform.com/
231995324350154](https://form.jotform.com/231995324350154)



Come join us in your favorite
pajamas for an evening storytime!
Young children and their families are
welcome! Story themed-activities
sponsored by CNC.



Contact the Erving Public Library or
CNC at budine@erving.com with any questions



THE UNION #28 COMMUNITY NETWORK FOR CHILDREN PROGRAM IS FUNDED BY THE COORDINATED FAMILY AND COMMUNITY ENGAGEMENT (CFCE) GRANT AWARDED TO THE UNION #28 SCHOOLS BY THE MASSACHUSETTS DEPARTMENT OF EARLY EDUCATION AND CARE, AND DONATIONS FROM THE COMMUNITY.